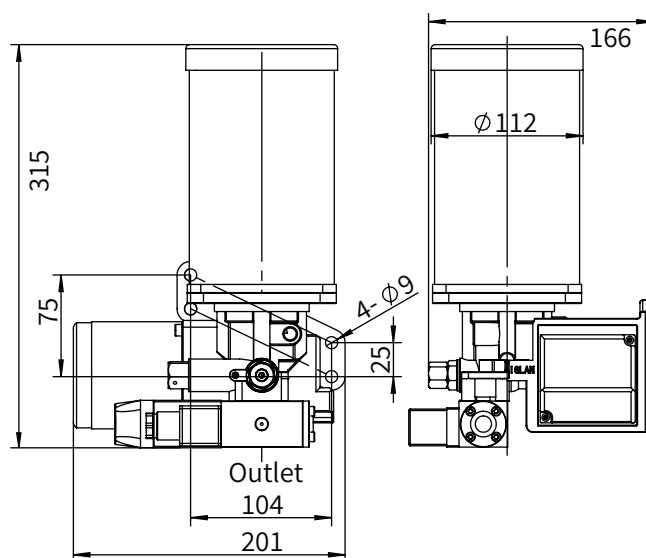


JHG4 Pressure-relief Pump(PLC)



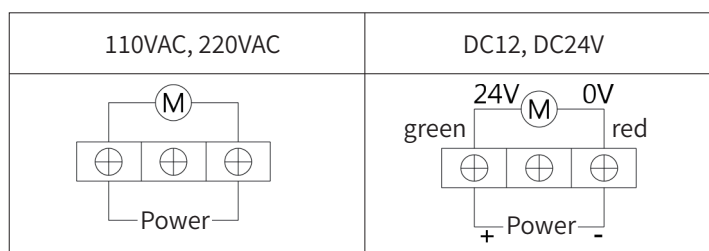
Feature

1. Lubrication and interval time are controlled by PLC.
2. Low level detector can be installed to detect oil level and automatically send out signal.
3. With pressure plate, for lubricants NLGI 000, 00, 0, 1.
4. Use a grease gun or automatic filling machine to refill grease from inlet to prevent air and debris from entering.
5. It needs to be used with a volumetric grease distributors.

Specification

Model	JHG4
Motor power	25 W
Lube time	PLC
Interval time	PLC
Pressure	8.0 MPa
Discharge	15 mL/min
Outlet dia.	Φ6 or Φ8
Reservoir	1500mL

Wiring



Order Code

JHG4	<input type="checkbox"/>	<input type="checkbox"/>	<input type="checkbox"/>	<input type="checkbox"/>
	Reservoir	Voltage	Outlet fittings	Low level switch
	15 = 1500mL	A = 110VAC B = 220VAC C = 12VDC	6 = Φ6 8 = Φ8	1 = NPN-NO contact 2 = PNP-NO contact 0 = Without
		D=24VDC E = 3~220V F = 3~380V		

Accessories

