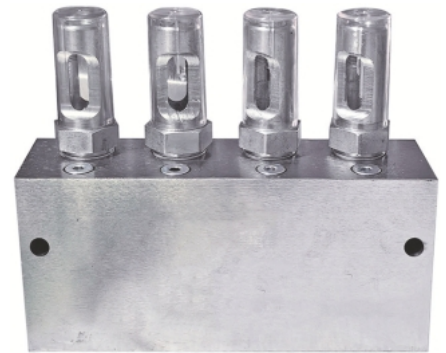


DV-H Dual-line Distributor(20MPa)

Suitable for 20MPa dual line centralized lubrication systems. It drives the piston to output lubricant under the alternating oil supply pressure of two oil supply pipes, completing the quantitative distribution of lubricant.

DV-H outlets are all at the bottom, and the distributor piston moves forward and backward from the same outlet for output. Every time the system works, each outlet is outputed once.

Operation of DV-H can be directly observed from indicator, and the output volume of each outlet can be adjusted within the specified range by adjusting the screws.



Specification

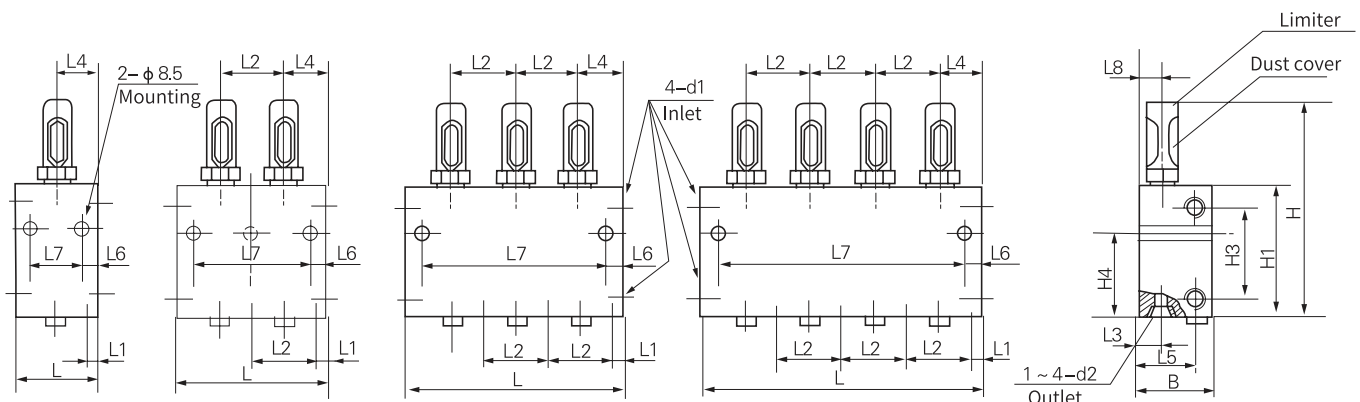
Model	Pressure	Action Pressure	Outlets	Output/outlet	Loss amount	1 screw amount	Weight kg
DV-31H	20 MPa	≤ 1.5 MPa	1	0.2~1.2mL/cyc	0.50mL	0.06mL	0.8
DV-32H			2				1.4
DV-33H			3				1.8
DV-34H			4				2.3
DV-41H		≤ 1.5 MPa	1	0.6~2.5mL/cyc	0.55mL	0.10mL	1.0
DV-42H			2				1.9
DV-43H			3				2.7
DV-44H			4				3.2
DV-51H		≤ 1.2 MPa	1	1.2~5.0mL/cyc	0.63mL	0.15mL	1.4
DV-52H			2				2.4
DV-53H			3				3.5
DV-54H			4				4.6
DV-61H		≤ 1.2 MPa	1	4.0~14mL/cyc	0.63mL	0.68mL	2.4
DV-62H			2				4.2
DV-63H			3				6.0
DV-64H			4				7.8

Note: Loss amount is the flow rate required to push the pilot piston.

DV-H lubricant: grease with 265(25 °C, 150g) 1/10mm (NLGI 0#~2#) or oil with grade greater than N68.

Ambient temperature temperature -10 °C~+80 °C. When it is oil, it can be used under a pressure of 10 MPa.

Dimension



Model	L	B	H	L1	L2	L3	L4	L5	L6	L7	L8	H1	H2	H3	H4	d1	d2		
DV-31H	44	38	104	8	29	11	22.5	27	10	24	11	64	11	42	39	Rc3/8	Rc1/4		
DV-32H	73								-	-					41				
DV-33H	102								10	82					48				
DV-34H	131									111									
DV-41H	50	40	125	9.5	31	11	25	30		11	76	11	54	48					
DV-42H	81							61											
DV-43H	112							92											
DV-44H	143							123											
DV-51H	53	45	138	9.5	37	14	28	33		14	83	13	57	53					
DV-52H	90							70											
DV-53H	127							107											
DV-54H	164							144											
DV-61H	62	57	149	10	46	29	33	45		42	20	89	16	57	56				
DV-62H	108									88									
DV-63H	154									134									
DV-64H	200									180									

Order Code

DV 6 4 H

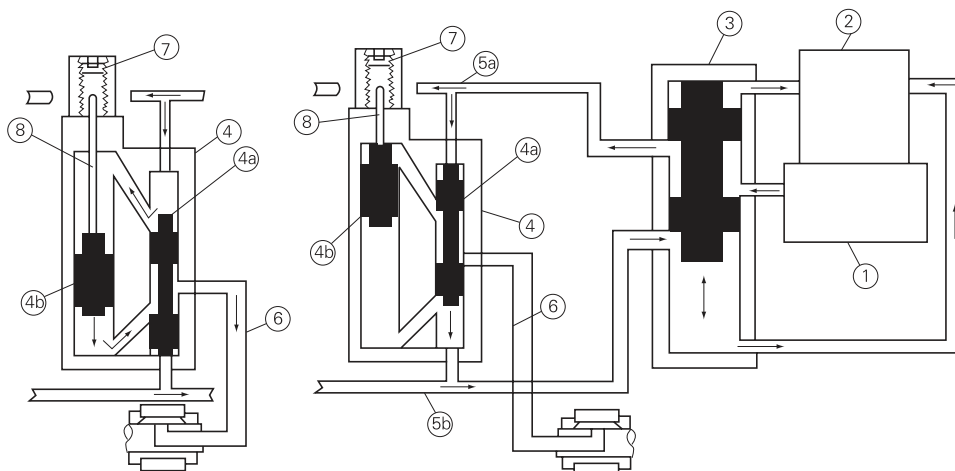
_____ Nominal pressure 20MPa
 _____ Number of outlets 1~4
 _____ Output (mL/outlet/cycle) 3 = 0.2~1.2, 4 = 0.6~2.5, 5 = 1.2~5.0, 6 = 4.0~14.0

DH-V has two oil inlet ports, which are respectively connected to the 5a and 5b tubes. When one of them is supplied by the lubrication pump, the other is opened to the reservoir.

Lubricant is transported to distributor 4 through tube 5a and enters the upper part of pilot piston 4a for pressurization, pressing down on pilot piston 4a. At this time, the lower part is connected to tube 5b for unloading. As the pilot piston 4a moves downwards, the upper chamber of the main piston 4b is connected to the upper chamber of the pilot piston, and the lower chamber of the main piston is connected to the outlet. Lubricant enters the upper chamber of the main piston, pushing it downwards. The lubricant in its lower chamber is pressed through tube 6 to the lubrication point, completing the first cycle.

Switch to tube 5b to start the second cycle, and the distributor piston moves in the same reverse order.

Output of each outlet is determined by diameter and stroke of main piston 4b. By adjusting screw 7 and changing the stroke of 4b, the output quantity can be adjusted.



1. Lubrication pump;
2. Reservoir;
3. Directional valve;
4. Dispenser;
- 4a. Pilot piston;
- 4b. main piston;
- 5a. Supply tube;
- 5b. Supply tube;
6. Output tube;
7. Adjusting screws;
8. Indicator rod