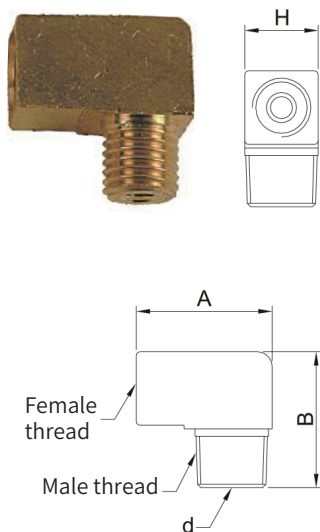
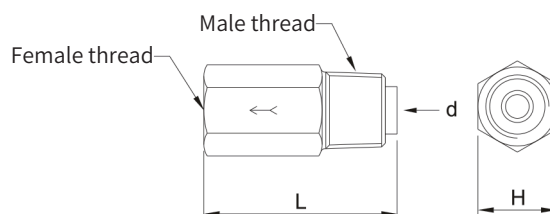
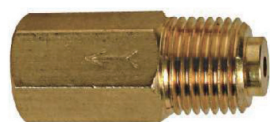


## Elbow Adapter



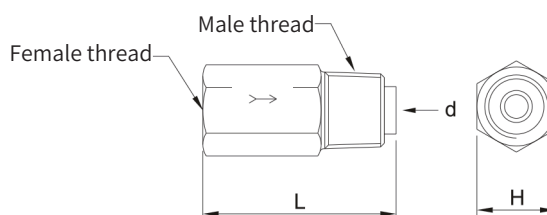
Model	Tube OD	d	A	B	H	Female thread	Male thread	N.W(g)
PH-401	Φ4	Φ3	18	18	10	M8xP1.0	PT1/8	13
PH-402	Φ4	Φ5	20	21	14	M8xP1.0	PT1/4	32
PH-403	Φ4	Φ6	20	20	12	M8xP1.0	PT3/8	20
PH-601	Φ6	Φ4	20	21	14	M10xP1.0	PT1/8	29
PH-602	Φ6	Φ5	26	29	17	M14xP1.5	PT1/4	52
PH-603	Φ6	Φ6	26	29	17	M14xP1.5	PT3/8	56
PH-801	Φ8	Φ4	26	29	17	M14xP1.5	PT1/8	59
PH-802	Φ8	Φ6	29	31	19	M16xP1.5	PT1/4	70
PH-803	Φ8	Φ8	29	31	19	M16xP1.5	PT3/8	76
Standard product (Metric Thread)								
Model	Tube OD	d	A	B	H	Female thread	Male thread	N.W(g)
PH-404	Φ4	Φ2	18	18	10	M8xP1.0	M4xP0.7	11
PH-405	Φ4	Φ2	18	18	10	M8xP1.0	M5xP0.8	11
PH-406	Φ4	Φ2	18	18	10	M8xP1.0	M6xP0.75	13
PH-4061	Φ4	Φ2	18	18	10	M8xP1.0	M6xP1.0	12
PH-408	Φ4	Φ3	18	18	10	M8xP1.0	M8xP1.0	13
PH-410	Φ4	Φ4	20	20	12	M8xP1.0	M10xP1.0	24
PH-608	Φ6	Φ3	20	20	12	M10xP1.0	M8xP1.0	20
PH-610	Φ6	Φ4	20	20	12	M10xP1.0	M10xP1.0	22

## One-way Straight Adapter



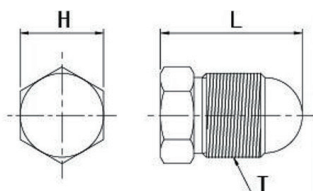
Model	Tube OD	d	L	H	Female thread	Male thread	N.W(g)
PD-4011	Φ4	Φ2.2	24.5	10	M8xP1.0	PT1/8	11
PD-6011	Φ4	Φ2.2	25.5	12	M10xP1.0	PT1/8	14

## Reverse Straight Adapter



Model	Tube OD	d	L	H	Female thread	Male thread	N.W(g)
PD-4012	Φ4	Φ2.2	24.5	10	M8xP1.0	PT1/8	11
PD-6012	Φ4	Φ2.2	25.5	12	M10xP1.0	PT1/8	14

## Closure Plug



Model	L	T	H	N.W(g)
PG-01	10	PT1/8	8	3
PG-04	15	M8x1.0	8	5.4
PG-06	18	M10x1.0	10	8.8