

Integrated U-type Progressive Distributor

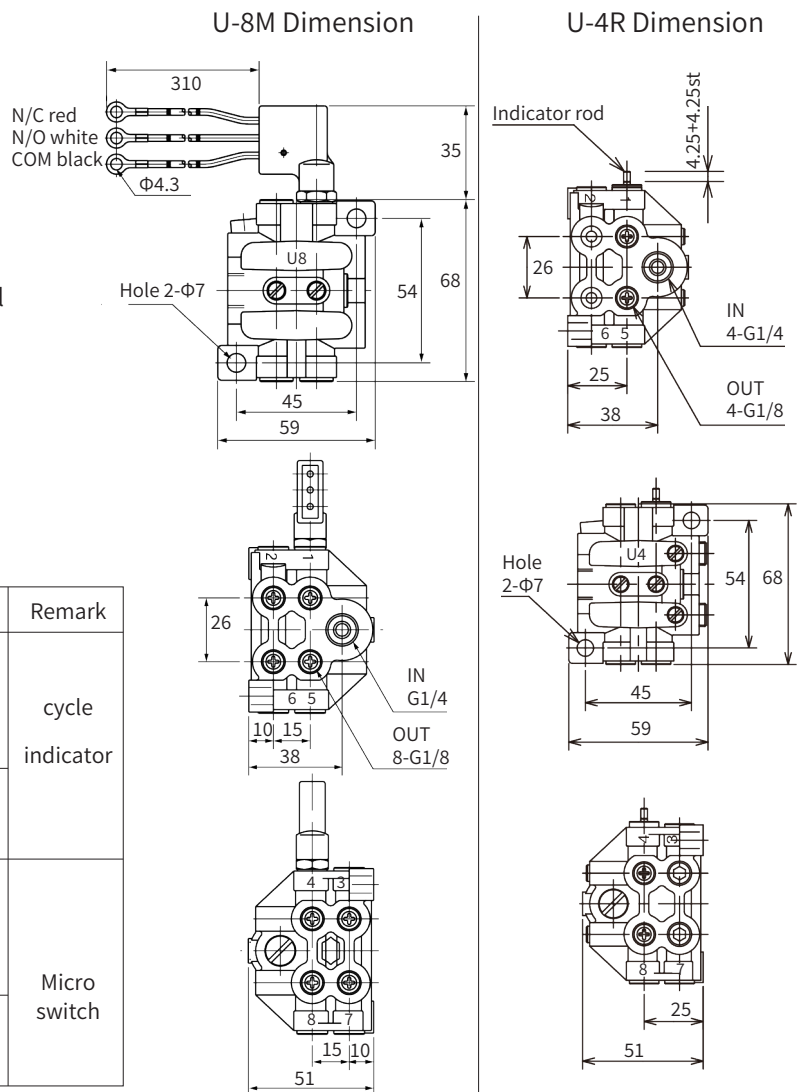
The integrated U-type progressive oil distributor can be used in medium pressure and wide temperature change conditions. It can form a single-line lubrication system with manual, electric, pneumatic pumps, etc. It is used for various small machine tools and plastic machinery equipment, or a sub-distributor of a large single-line lubrication system.

A typical set of U-type distributors can usually provide lubrication for 4, 6, 8, 10 or 12 lubrication points. The U-type distributor has only one displacement specification of 0.3mL/cyc. Note that for the oil outlet of the distributor, any oil outlet cannot be blocked to affect its normal operation, otherwise the distributor will be damaged.

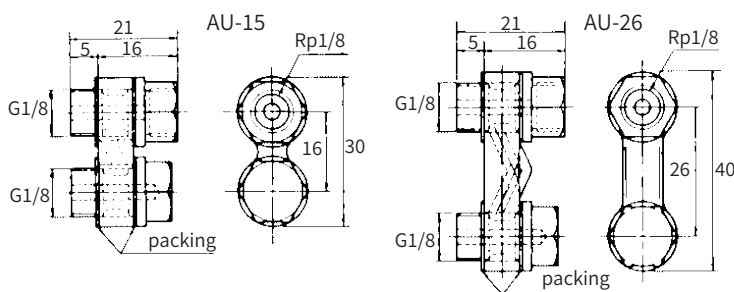
Specification

1. Maximum nominal pressure: 15MPa
2. Standard displacement: 0.3mL/cyc
3. Lubricant range (at standard temperature):
Lubricating oil \geq N68, grease NLGI 000#~1#
4. Working environment temperature: $-10^{\circ}\text{C} \sim +60^{\circ}\text{C}$
5. Max circulation rate of plunger pair of mechanical cycle indicator: 60cyc/min
6. Max circulation rate of plunger pair: 200cyc/min
7. Number of lubrication points: 4, 6, 8, 10, 12
8. Pipeline length: $\Phi 4/0.5 \sim 2.5\text{m}$, $\Phi 6/1.2 \sim 3.5\text{m}$
9. Valve body material: aluminum alloy

Model	Outlets	Output	A	B	Remark
U-4R	4	0.3mL/cyc	51	38	cycle indicator
U-6R	6				
U-8R	8				
U-10R	10				
U-12R	12				
U-4M	4	0.3mL/cyc	51	38	Micro switch
U-6M	6				
U-8M	8				
U-10M	10				
U-12M	12				



Flow Connector



Model	No.
AU-15	RK864401
AU-26	RK864404

UM and M Progressive Distributor

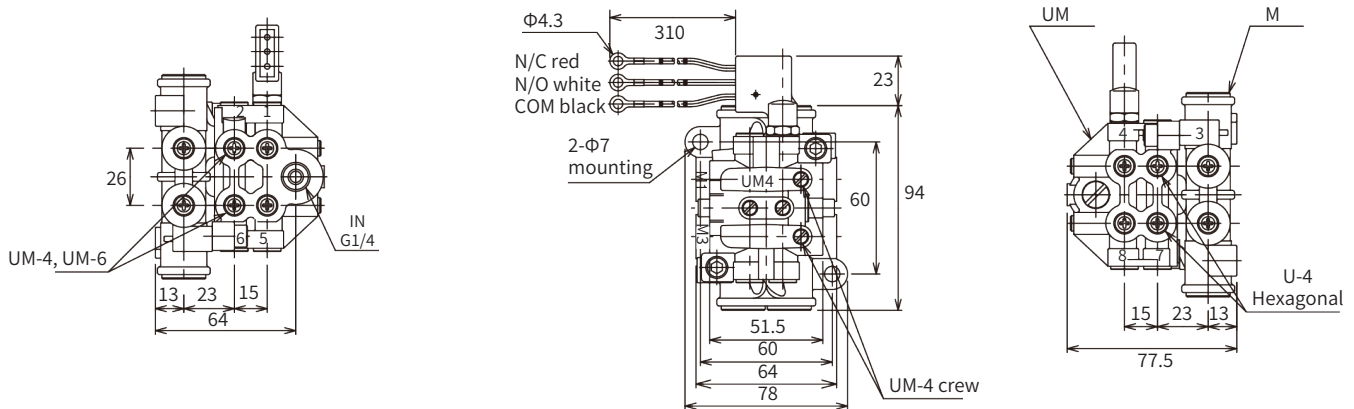
A typical set of UM-type distributors must be used in combination with M-type distributors and cannot be used alone. They can usually lubricate 6, 8, 10, 12, 14 or 16 lubrication points. UM-type distributors have only one displacement specification of 0.3mL/cyc, while M-type distributors have four displacement specifications of 1mL/cyc, 1.5mL/cyc, 2mL/cyc and 3mL/cyc. Note that any oil outlet cannot be blocked to affect its normal operation, otherwise the distributor will be damaged.

Specification

1. Maximum nominal pressure: 15MPa
2. Standard displacement: 0.3mL/cyc~3.0mL/cyc
3. Lubricant range (at standard temperature):
Lubricating oil \geq N68, grease NLGI 000#~1#
4. Working environment temperature: -10°C ~ +60°C
5. Max circulation rate of plunger pair of circulation indicator rod: 60 cyc/min
6. Max circulation rate of plunger pair: 200cyc/min
7. Number of outlets: 4, 6, 8, 10, 12, 14, 16. UM can be combined with M(?-?). Example, for 16 outlets, UM can be combined with M (15-15) or M (30-30).
8. Optimal pipeline: $\Phi 4/0.5 \sim 2.5\text{m}$, $\Phi/1.2 \sim 3.5\text{m}$
9. Valve material: aluminum alloy
10. Note: "M*" indicates output is the combined distributor M (?-?).

Model	Outlets	Outlet serial No.	mL/cyc	A	B
UM-4R*	4	1, 5	M*	51	38
		4, 8	0.3		
UM-6R	6	1, 5	M*		
		3, 4, 7, 8	0.3		
UM-8R	8	2, 6	M*	66	53
		1, 3, 4, 5, 7, 8	0.3		
UM-12R	12	3, 9	M*		
		1, 2, 4, 5, 6, 7, 8, 10, 11, 12	0.3		
UM-4M*	4	1, 5	M*	51	38
		4, 8	0.3		
UM-6M	6	1, 5	M*		
		3, 4, 7, 8	0.3		
UM-8M	8	2, 6	M*	66	53
		1, 3, 4, 5, 7, 8	0.3		
UM-12M	12	3, 9	M*		
		1, 2, 4, 5, 6, 7, 8, 10, 11, 12	0.3		
M(0-10)*	2	M2, M4	0.3	-	-
M(0-15)	2	M2, M4			
M(0-30)	2	M2, M4			
M(15-15)	4	M1, M3			
		M2, M4	1.5		
			0.3		
			3		
			0.3		

UMM-4, 6, 8M (□-□) (Micro switch)



UMM-12R (□-□) (Mechanical cycle indicator rod)

