

VSG-KR Dual-line Distributor (40MPa)

Feature

The VSG-KR dual line distributor has outlets on both the top and bottom, and when the distributor piston moves forward and backward, it is discharged once from the outlets on both sides. There is a combined oil discharge structure in the corresponding upper and lower outlets. To change the odd number of outlets, simply adjust the direction of the guide sleeve. The operation of the distributor can be observed from the action of the indicator rod, and the discharge of each outlet can be adjusted within the specified range by adjusting the screws. This type of distributor is used for dual line grease lubrication systems with a nominal pressure of 40MPa.



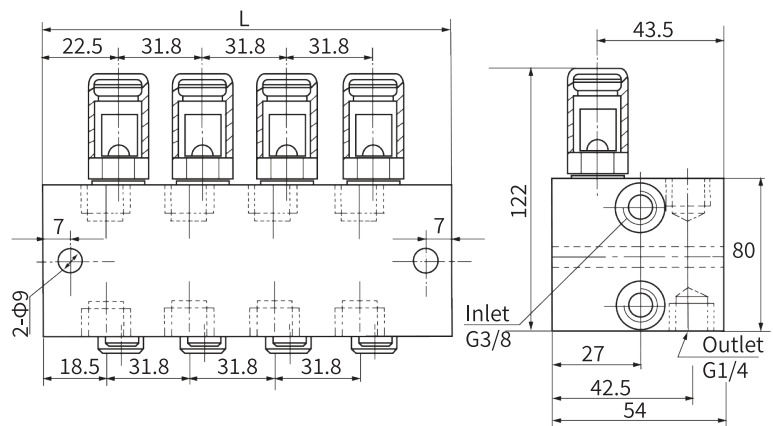
Specification

Model	Nominal pressure	Action pressure	Rated discharge	Adjusting screw Flow
VSG-KR	40 MPa	≤ 1.2 MPa	0 ~ 2.3 mL/cyc	0.14mL/circle

The medium used is lubricating grease NLGI 0#~ 2# or lubricating oil with viscosity grade greater than N68. The operating environment temperature is -10 °C ~ 80 °C. If the medium used is lubricating oil, please use it under 20MPa pressure.

Dimension

Model	VSG2-KR	VSG4-KR	VSG6-KR	VSG8-KR
Outlets	2	4	6	8
L(mm)	44.5	76	108	140
N.W(kg)	1.5	2.5	3.5	4.5



Order Code

VSG 8 KR F 22

- Fixed output screw: 0 = Without; 5 = 0.5mL/cyc; 10 = 1.0mL/cyc; 22 = 2.2mL/cyc
- F = Viton seal, N = NBR rubber seal
- KR = With pointer adjustment device
- Number of outlets 2 ~ 8

Instructions

If it is necessary to merge the upper and lower outlets, unscrew the screw in the hole, and plug the unused outlet with G14 screw plug to prevent dust intrusion.

If the installation environment temperature of the distributor is outside the range of -10 °C ~ 80 °C, it must be indicated in the order contract to provide low and high temperature oil seals.