

## J203 Electric Grease Pump

The J203 lubrication pump is versatile, compact and economical and can supply up to 150 lubrication points, depending on the line length. It consists of a housing with integrated motor, reservoir with stirring paddle, pump element (optionally incl. pressure-relief valve), filling nipple and electrical connection parts. This powerful pump can drive up to three pump elements and can be equipped with a low-level control (with or without control board).



## Specification

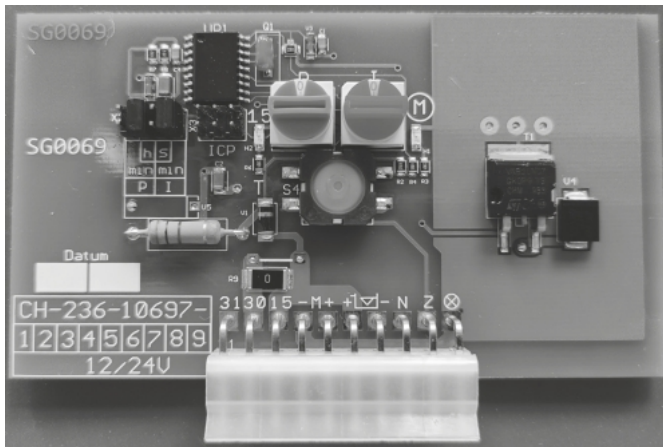


Fig. 1 - Printed circuit board

- The printed circuit board automatically controls the sequence of the pause and operating times of the model J300 central lubrication pump as a function of the vehicle or machine working hours  $t_B$  (Fig.1).
- The sequence of the pause and operating times is activated when the machine contact or driving switch is switched on.

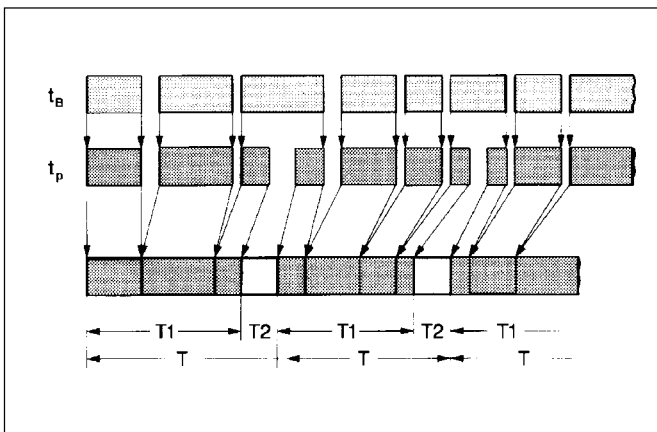


Fig.2 - Time sequence diagram

$t_B$  -Working hours

$t_P$  -Various pause times

T-Lubrication cycle

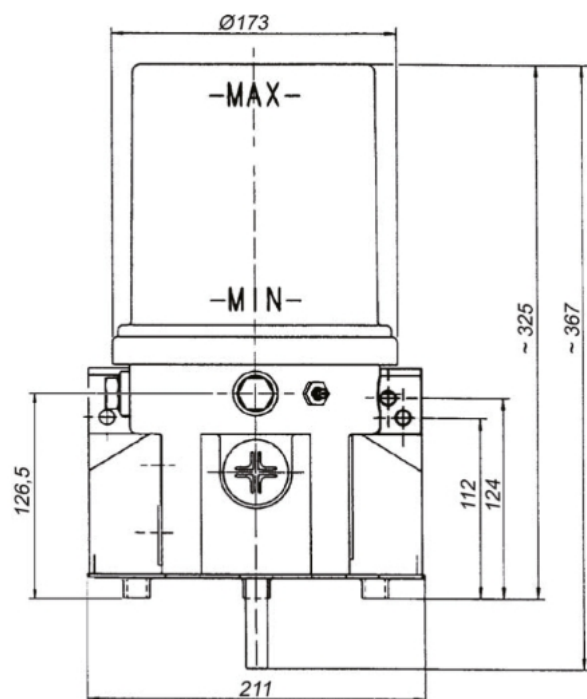
T1-Stored pause times

T2-Operating times

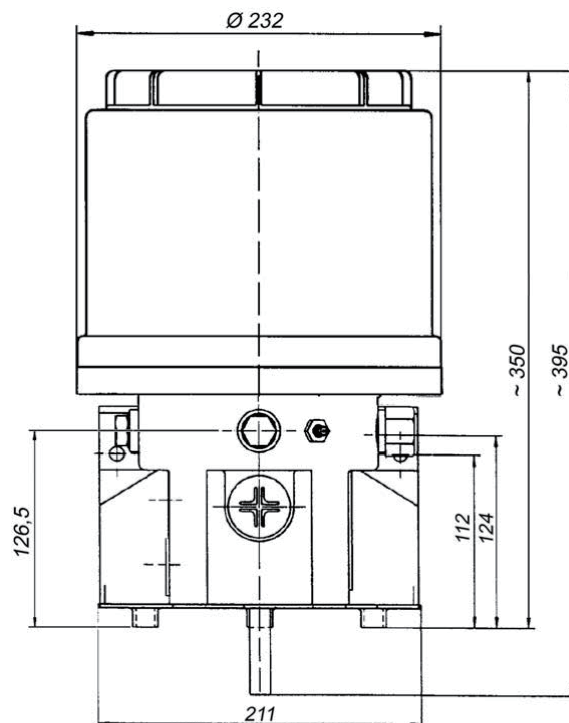
- A lubrication cycle consists of one pause time and one operating time. Once the pause time has elapsed, the operating time starts to run. This lubrication cycle is repeated permanently after the machine or vehicle has been put into operation. (Fig. 2)
- During the operating time the pump element dispenses the lubricant to the lubrication points via progressive metering devices.

## Dimension

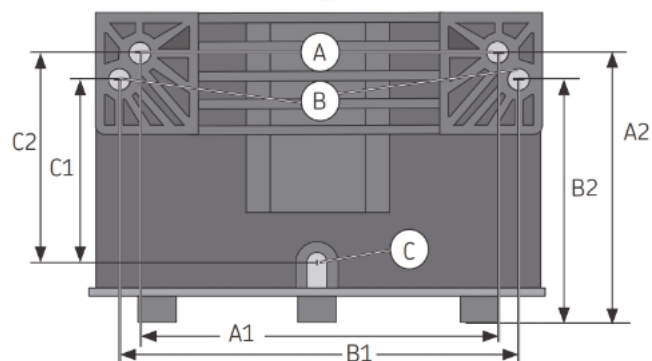
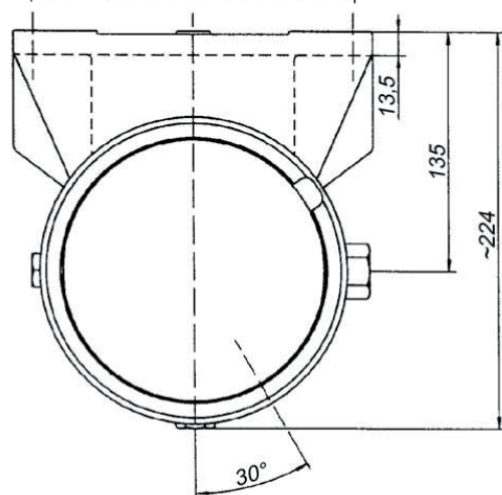
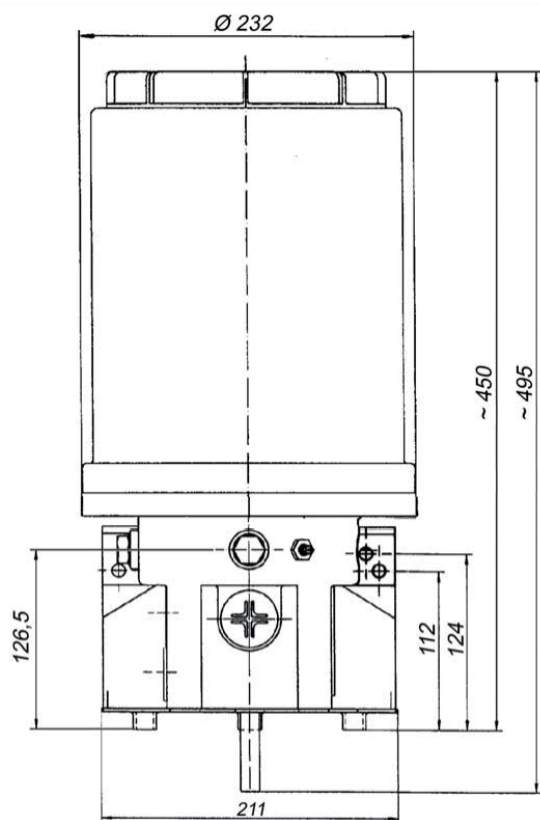
2 litre reservoir (standard)



4 litre reservoir to be filled from the top



8 litre reservoir to be filled from the top



A1 = 162 mm    B1 = 180 mm  
A2 = 124 mm    B2 = 112 mm  
C1 = 83 mm    C2 = 95 mm

Time Setting

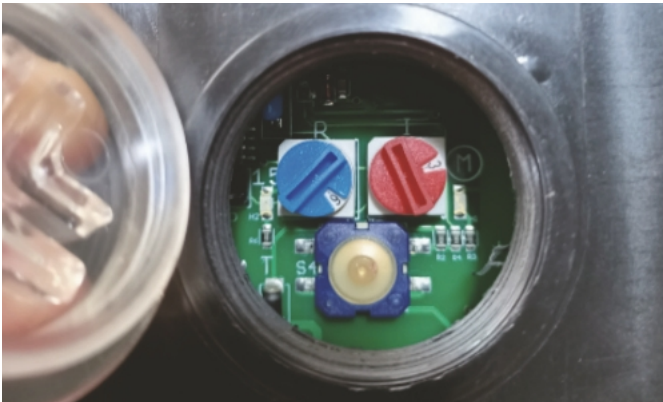


Fig. 3 - The cover to access the printed circuit board has been removed

\* To set the pause or operating time, remove the cover on the pump housing.

Note: To reset a jumper (Fig. 3), remove the printed circuit board.

Important: After having set the pause time or operating time, screw the cover on the pump housing again.



Fig. 4 - Rotary switch - Pause time

To set the pause time

The pause time can be set to 15 different settings by means of the blue rotary switch.

Time ranges: Minutes or hours

Switch position	1	2	3	4	5	6	7	8	9	A	B	C	D	E	F
Minutes	3.75	7.5	11.25	15	18.75	22.5	26.25	30	33.75	37.5	41.25	45	48.75	52.5	56.25
Hours	1	2	3	4	5	6	7	8	9	10	11	12	13	14	15

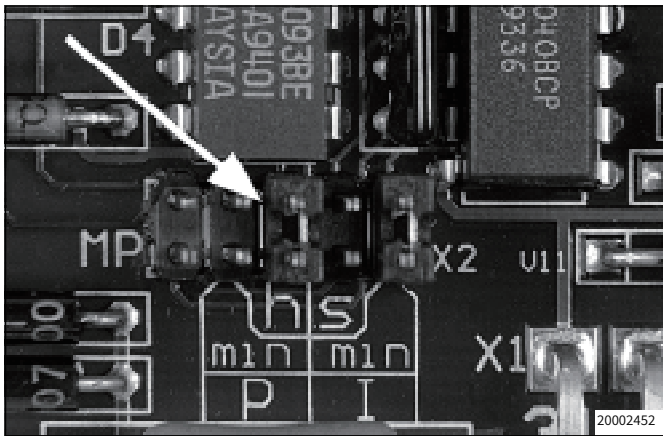


Fig. 5 - Preselection of the time range

Note: The 0 setting has no function.

Factory setting

Rotary switch on : ..... 6 hours  
or ..... 22.5 minutes

- The time ranges can be modified by replugging the jumper (Fig. 5) on the printed circuit board.
- Factory setting of the jumper The combination number can be learnt from the pump type designation code mentioned on the nameplate of each pump.

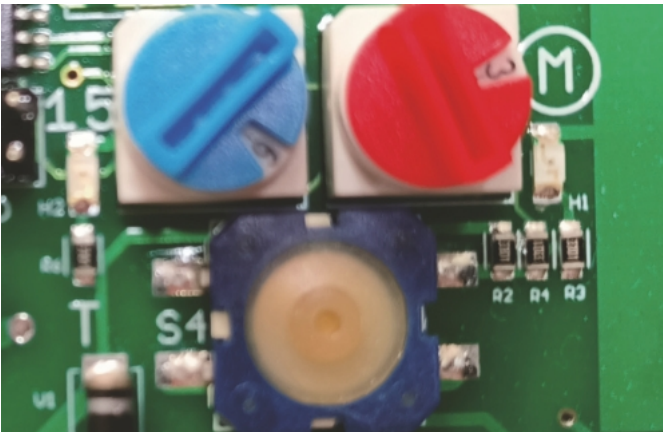


Fig. 6 - Rotary switch - Operating time

To set the operating time

- The operating time can be set to 15 different setting by means of the red rotary switch.

Time ranges: Seconds or minutes

Switch position	1	2	3	4	5	6	7	8	9	A	B	C	D	E	F
Seconds	7.5	15	22.5	30	37.5	45	52.5	60	67.5	75	82.5	90	97.5	105	112.5
Minutes	2	4	6	8	10	12	14	16	18	20	22	24	26	28	30

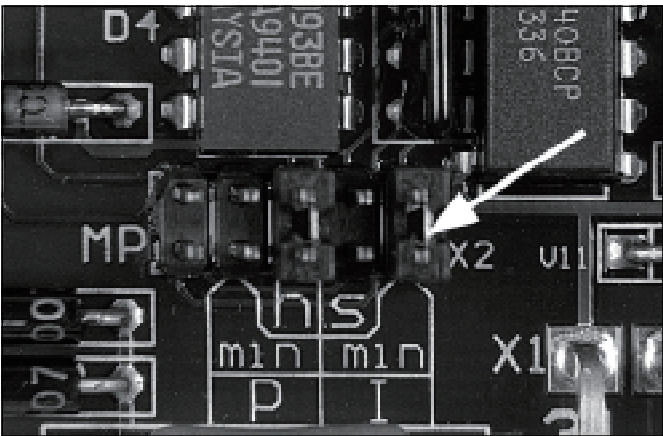


Fig. 7 - Preselection of the time range

Note: The 0 setting has no function.

Factory setting

Rotary switch on : ..... 6 minutes  
or ..... 22.5 seconds

- The time ranges can be modified by replugging the jumper (Fig. 7) on the printed circuit board.