

BSB Electric Pump

The BSB pump is composed of dual plunger valves and an oil tank, and is driven by an AC motor. The rotational motion of motor is converted into reciprocating motion of plunger through an eccentric wheel, achieving the process of oil suction and pressure. This pump can be used for both dual line lubrication systems and single line progressive systems. The pump should be installed at the center of the system, capable of supplying grease to up to 1000 lubrication points. The cumulative length from the pump outlet to the farthest end of the main pipeline should be controlled within 100m. Max pressure 40MPa, Lubricant Grease NLGI 000-3# & Oil \geq N68, Working temperature -20°C~+80°C.

Order code

BSB 1 01 A 01 0

0= Without, 1 = Electric control box(fixed pump group default with)

01 = Microswitch (default), 02 = Limit switch,

03 = 24VDC ultrasonic level switch, 04 = 220VAC ultrasonic level switch

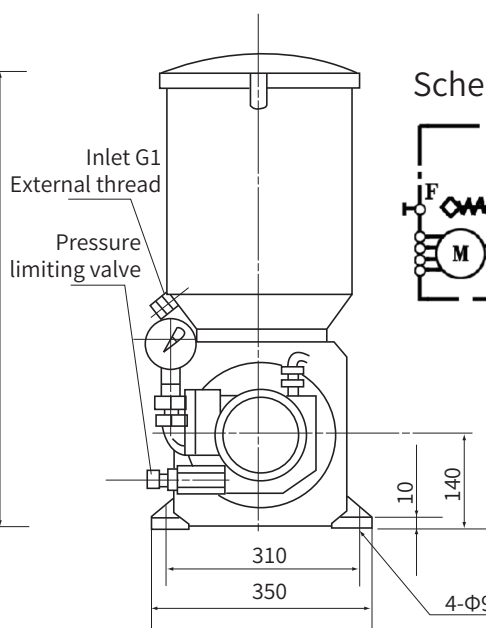
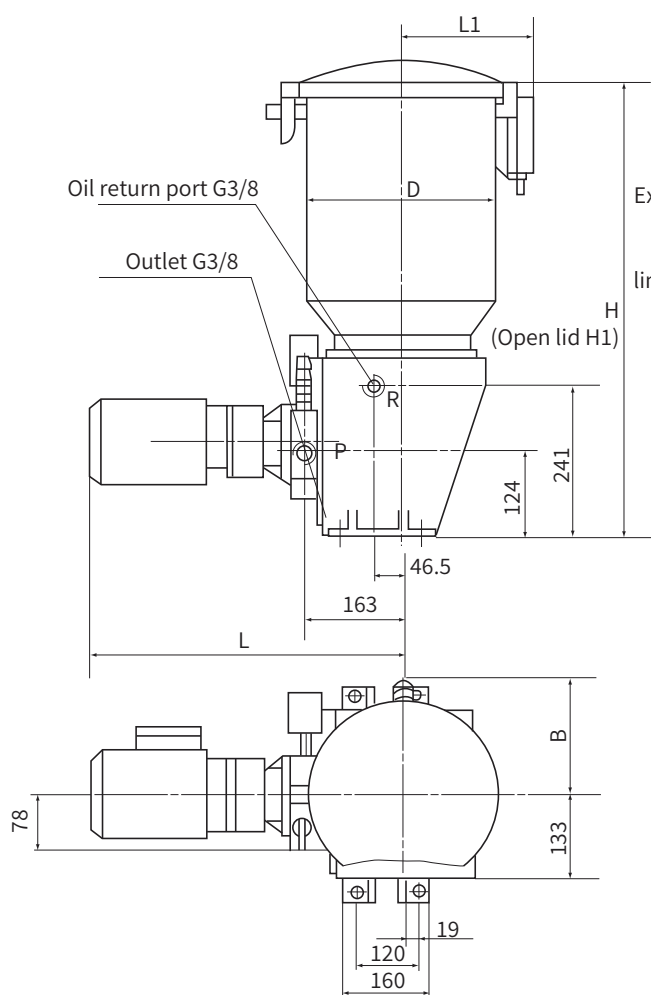
A = 30L, B = 60L, C = 100L

01 = 120mL/min, 0.75 kw(80 rpm), 3-phase 380V 50Hz

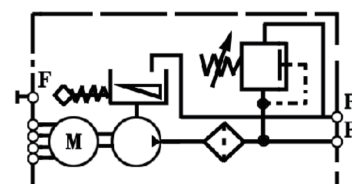
02 = 235mL/min, 1.5 kw(160 rpm), 3-phase 380V 50Hz

03 = 365mL/min, 1.5 kw(250 rpm), 3-phase 380V 50Hz

1 = Pump only, 2 = With trolley, 3 = Fixed pump group



Schematic diagram

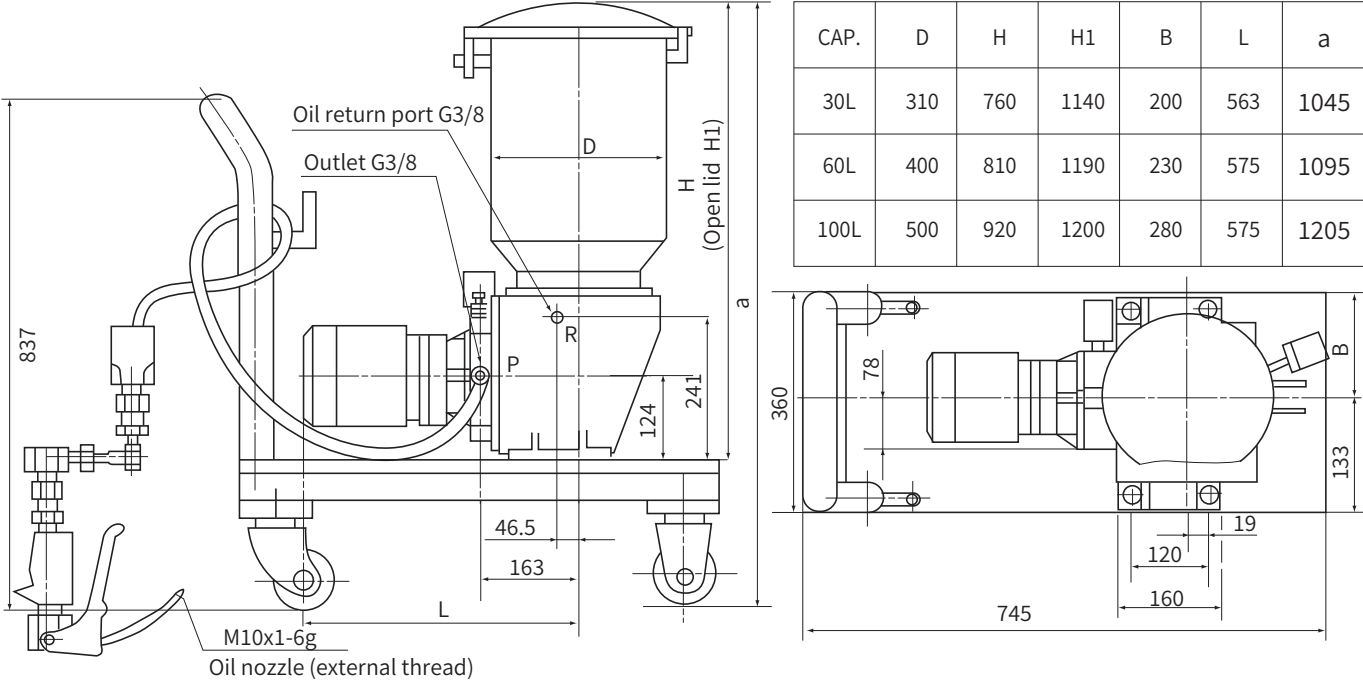


CAP.	D	H	H1	B	L	L1
30L	310	760	1140	200	563	233
60L	400	810	1190	230	575	278
100L	500	920	1200	280	575	328

BSB Fixed / Mobile Pump Group

BSB-2 is a mobile pump group with a trolley, rubber hose, oil gun, cable, and control box, specifically designed for equipment with low lubrication frequency, few lubrication points, large oil supply, and inconvenient centralized lubrication. BSB-3 is a fixed pump unit with a control box, directional valve (220V), distributor, and differential pressure switch. It can be used in dual line lubrication systems and can be used with dual line distributors to lubricate heavy machinery or production lines.

BSB-2 Dimension



BSB-3 Dimension

